








**AMY DI SAN FERMO detto EMI**

2019-06-02 (F) LOI LO19134655

[fiche affixe](#)



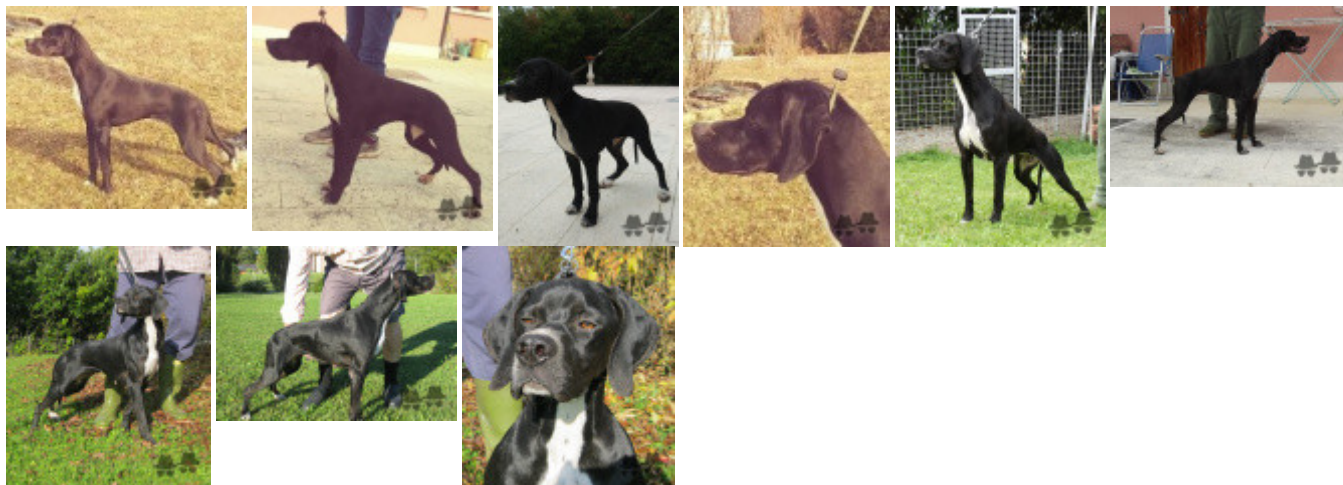
<p>Père</p> <p><a href="#">CAELUM BOLT</a> 2012-11-11 (M) LOI LO1314424</p> 	<p><a href="#">DEVIL DOS POTINHOS</a> 2009-03-28 (M) LOI LO1261136 (CH GQ)</p> 	<p><a href="#">BISBAL DEL ESTILO Y PASION</a> (M) LOE</p>	<p><a href="#">RONALDO DEL ESTILO Y PASION</a> (M) LOE 1349648</p>	
	<p><a href="#">GINEVRA</a> 2010-10-20 (F) LOI LO115833</p>	<p><a href="#">XE DOS POTINHOS</a> (F) LOE</p>	<p><a href="#">SARA</a> (F) LOE 1266685</p>	<p><a href="#">VEN DE AKELARRE</a> (M) LOE 1498736</p>
<p>Mère</p> <p><a href="#">AMBRA DI SAN FERMO</a> 2015-06-06 (F) LOI LO15102010</p> 	<p><a href="#">ASSO DI PISTAFFA</a> 2006-07-12 (M) LOI LO06113629 (CH. Ital. Lavoro e Camp. Internaz. Bellezza)</p> 	<p><a href="#">ARAMIS</a> 2008-02-11 (M) LOI LO096 (CH P, Ch. Ital. Lav.)</p>	<p><a href="#">FIANO DEL VOLTURNO</a> 2002-03-29 (M) LOI LO02159092 (CH GQ, Ch. Ital. Lav., Camp. Ripr., Ch. Int. Lav.)</p>	
	<p><a href="#">LINDA DELLE MACCHIE</a> 1991-09-11 (F) LOI LO01160962</p>	<p><a href="#">OSE' DELL'ARCIERE</a> 1992-08-20 (F) LOI LO02119708</p>	<p><a href="#">OLGA</a> 2001-03-27 (F) LOI LO01133406</p>	<p><a href="#">ACHIM</a> 1987-09-28 (M) LOI PT149902</p>
	<p><a href="#">AMINA DI SAN FERMO</a> 2010-10-14 (F) LOI LO112932</p> 	<p><a href="#">MARCO DI PISTAFFA</a> 1999-05-26 (M) LOI LO99127899</p>	<p><a href="#">MIA DELL'ARCIERE</a> 1990-05-15 (F) LOI PT167397</p>	<p><a href="#">CLASTIDIUM FARO</a> 1993-06-03 (M) LOI PT180217</p>
	<p><a href="#">CINDI DELLA BOSCHINA</a> 2002-01-15 (F) LOI LO0248950</p>	<p><a href="#">LINDA DELLE MACCHIE</a> 1991-09-11 (F) LOI LO01160962</p>	<p><a href="#">ZIMA DI PISTAFFA</a> 1992-09-01 (F) LOI PT176812</p>	<p><a href="#">DOGGO DEI CERCHIARI CH</a> 1985-01-21 (M) LOI PT133689 (CH(I)B)</p>
	<p><a href="#">ABATENERO DI SAN FERMO</a> 1999-07-25 (M) LOI LO0011505</p> 	<p><a href="#">QUERCIA DEL CRESAL</a> 1987-09-06 (F) LOI PT149762</p>	<p><a href="#">MAZOE</a> 1993-09-07 (M) LOI PT182195 (Ch. Ital. Lav., Ch. Int. Lav., Camp. Ripr.)</p>	
		<p><a href="#">ABAI DI SAN FERMO</a> 1995-06-15 (F) LOI PT192182</p> 	<p><a href="#">FULL DELLA BOSCHINA</a> 1996-06-05 (M) LOI PT194019</p>	
		<p><a href="#">OLIVIA DELLA BOSCHINA</a> 1998-06-09 (F) LOI LO98158247</p>		

[ [Lien...](#) ] / Eleveur : Paolo Bampo / Propriétaire : Paolo Bampo (--, bampop@libero.it)  
Tatouage : --  
Puce : 380260043742058  
Estimation des points au pédigrée : 12



## Résultats concours

Lieu	Date	Type	Epreuve	N°	Juge	Conducteur	Qualif.	Pts
IT <a href="#">Treviso</a>	2003-09-22	expo			Di M.Domenico		CAC-CACIB	11
<i>Total des points Challenge France 2003</i>								11
IT <a href="#">Isola Vicentina</a>	2025-06-22	expo			Matteo di		R CAC	11
<i>Total des points Challenge France 2025</i>								11
Total des points								22
<i>Coefficients : solo x1, couple x2 / GT x1, GN x2, GS (bécasse, bécassine) x2, GS montagne x3, Printemps x2, Grande Quête x4</i>								



Note : les données ne sont pas garanties. Elles ont été entrées par les membres sans garantie d'exactitude.